

INTRODUCING . . .



**CHIC CHARMING CLASSIC  
SUITE**

Welcome Pack

# MAIN MENU



**Who Is F&S  
Properties?**



**About The  
Property**



**House Rules**



**Polite Reminders**



**Getting  
Around**



**Local Attractions**



# WHO IS F&S PROPERTIES?



Your go-to provider of serviced accommodation properties.

F&S Properties are ideal for short to mid term stays, contractors, relocations, emergency accommodation and leisure.

Our portfolio of properties includes a variety of affordable and premium options in various locations, including the picturesque Rhondda Valleys in South Wales, the seaside charm of Southend-on-Sea, and the vibrant energy of North London's Enfield. Each of our properties is conveniently located near amenities and attractions, ensuring that you have everything you need to make the most of your stay.

Whether you are seeking a cosy apartment or a spacious house, we ensure that each property meets our high standards of comfort and convenience. Our team work tirelessly to maintain and manage our properties, ensuring that you have a seamless, stress-free and personalised home away from home experience!



**07418 382269**



**[bookings@feelathome.properties](mailto:bookings@feelathome.properties)**



[Main Menu](#)



# ABOUT THE PROPERTY



13 Augustus Street, Pontypridd, Wales CF37 3LH  
(access instructions & key box codes are sent via direct message on the day of check-in)



Wi-Fi Network - **NOWU1XIB**

Wi-Fi Password - **s1mgak8bkPIL**



[Property Web Link](#)



[Property Video Walkthrough](#)



Check-in - From 3pm onwards of arrival date  
Check-out - By 10am of departure date

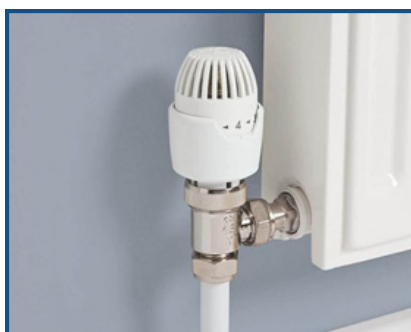


Unrestricted road parking is available outside the house along the street.



## Heating Instructions:

- \* The HIVE Mini thermostat is located on the wall in the main entrance hallway.
- \* Press the + or - buttons to adjust the temperature.
- \* Use the Boost button for extra heating.
- \* Please turn off the heating when not in use or before leaving.



**! IMPORTANT! !** : Each room has thermostatic radiator valves. If a radiator isn't heating, check that its valve is turned on.



# HOUSE RULES



No parties or events allowed.



Please don't eat or drink in the bedrooms.



No illegal substances allowed on the premises



No unregistered guests allowed.



Please turn off the heating when you go out.



Please do your dishes.



Please don't rearrange the furniture.



Please look after the furniture, or face paying damages.



Take extra care of your keys, or face a replacement fee.



Please respect the noise curfew.  
Quiet time = 10pm-8am.



Please take out your trash before you leave.



Please respect check-in and check-out times.



## POLITE REMINDERS



When you're not in the house could you please turn the heating off until you return.

Please take off shoes whilst in the property..



It's a no smoking property. If you do wish to smoke can you smoke outside in the garden.

Pets are not allowed anywhere on the property.



### **Before You Leave, Please:**

- ✓ Remove any food from the fridge and freezer.
- ✓ Do not leave perishable items in the cupboards.
- ✓ Turn off all lights and electronic devices (TV, coffee machine, etc.).
- ✓ Ensure the stove/hot plates are off.
- ✓ Lower the thermostats and turn off the heating.
- ✓ Close and lock all windows and doors.
- ✓ Check each room for any belongings you may have left behind.
- ✓ Return the keys to the key box as you collected them. Scramble the code and close the flap securely.

### **We'd Love Your Feedback!**

- ★ If you enjoyed your stay, please leave us a 5-star review—it really helps us!
- 💬 Have suggestions? Let us know via text/WhatsApp: +44 7418 382269

### **Book With Us Directly & Save!**

For future stays, reach out to us directly—we'd love to offer you a loyalty discount on your next booking.

Thanks again for choosing our property. Safe travels! 🚀

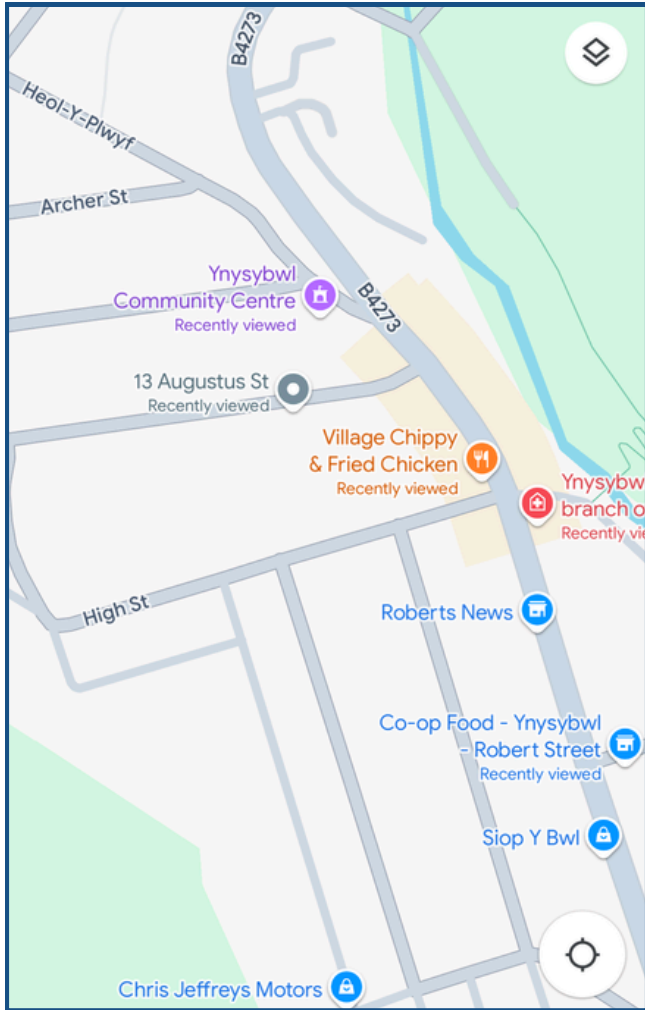
**Book directly at [www.feelathome.properties](http://www.feelathome.properties)**



[Main Menu](#)



# GETTING AROUND



## Walk



- \* 1min away - Village Kebab House / Village Chippy & Fried Chicken Takeaway
- \* 2mins away - Ynysybwl Community Centre
- \* 2mins away - Ynysybwl GP Medical Surgery
- \* 4mins away - Co-op Convenience Store

## Car



- \* 11mins away - Pontypridd town centre. Includes stores such as Sainsbury's Superstore, Sports Direct, River Island, Holland & Barrett, & Pontypridd Market

## Train



- \* 11 mins drive away - Pontypridd Train Station
- \* 15 mins drive away - Abercynon Train Station
- \* 20mins drive away - Porth Train Station

## Bus



- \* Nearest bus stop - 2mins away (Roberttown Hotel)
- \* Routes at this stop -
  - 25 (Pontypridd <-> Fernhill)
  - 102 (Glyncoch <-> Nantgarw)
  - 106 (Pontypridd <-> Ynysybwl)
  - 112 (Old Ynysybwl <-> Nantgarw)

# LOCAL ATTRACTIONS

(within ~30 mins of property)



## CASTELL COCH

Cardiff CF15 7JS

[www.cadw.gov.wales/visit/places-to-visit/castell-coch](http://www.cadw.gov.wales/visit/places-to-visit/castell-coch)

## PONTYPRIDD MUSEUM

Bridge St, Pontypridd CF37 4PE

[www.pontypriddtowncouncil.gov.uk/museum](http://www.pontypriddtowncouncil.gov.uk/museum)



## RHONDDA HERITAGE PARK

Rhondda Heritage Park, Coedcae Rd, South Wales CF37 2NP

[www.rctcbc.gov.uk/EN/Tourism/RhonddaHeritagePark/Home.aspx](http://www.rctcbc.gov.uk/EN/Tourism/RhonddaHeritagePark/Home.aspx)

## BRECON MOUNTAIN STEAM RAILWAY



## ZIP WORLD TOWER COLLIERY



## ST. FAGAN'S NATIONAL MUSEUM OF HISTORY



## TAFF VALLEY QUAD BIKE & ACTIVITY CENTRE



## BIKEPARK WALES

